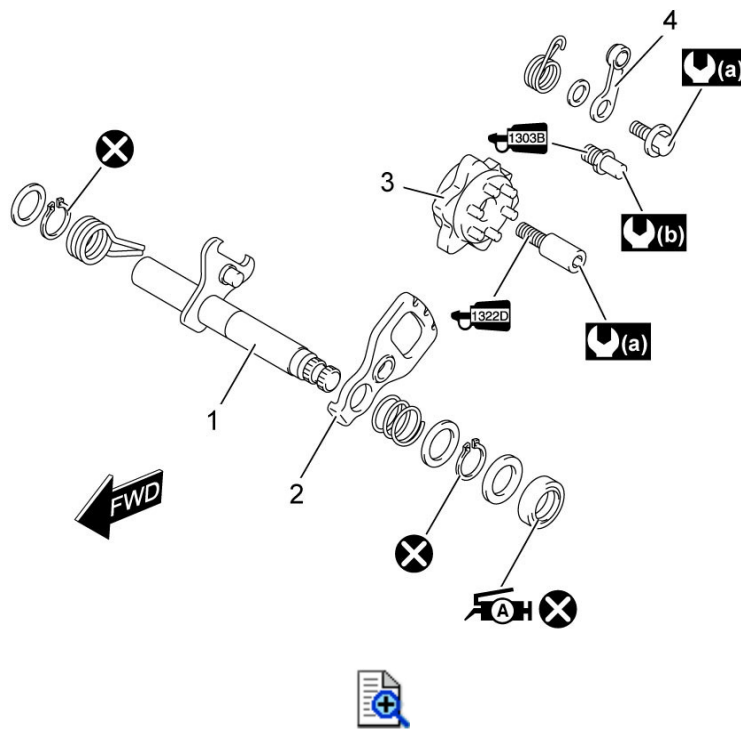


5B



Gearshift Shaft / Gearshift Cam Plate Components



1.	Gearshift shaft
2.	Gearshift cam drive plate
3.	Gearshift cam plate
4.	Gearshift cam stopper
(a)	10 N·m (1.0 kgf-m, 7.5 lbf-ft)
(b)	19 N·m (1.9 kgf-m, 14.0 lbf-ft)
	Apply thread lock to thread part.
	Apply thread lock to thread part.
	Apply grease to oil seal lip.
	Do not reuse.